

The background image shows two women wearing hijabs, one in a brown one and one in a pink one, looking at a large color chart on a table. The chart has various color swatches in a grid. The text is overlaid on a semi-transparent white rectangle.

IASCTM

INTERNATIONAL
ASSOCIATION OF
STYLE COACHES

DIGITAL COLOUR TOOLS
FOR PROFESSIONAL STYLE COACHESTM



COLOUR ANALYSIS CHEAT SHEETS

EPISODES 1 & 2

BROUGHT TO YOU IN PARTNERSHIP WITH

Style Coaching Institute[®]
GLOBAL LEADERS

Cheat Sheet: SKIN TONE

		UNDERTONE					
		COOL		NEUTRAL		WARM	
LIGHT		BEIGE FAIR		NATURAL FAIR		GOLDEN LIGHT	
MEDIUM		BEIGE LIGHT	BEIGE	NATURAL LIGHT		GOLDEN MEDIUM	GOLDEN DARK
		BEIGE MEDIUM	BEIGE DARK	NATURAL MEDIUM	NATURAL DARK	HONEY FAIR	HONEY LIGHT
MEDIUM DEEP		COCOA LIGHT		TAWNY FAIR		HONEY MEDIUM	HONEY DARK
DEEP		COCOA		TAWNY MEDIUM	TAWNY MEDIUM	CHESTNUT LIGHT	
		COCOA MEDIUM	DEEP MAHOGANY			CHESTNUT MEDIUM	

Cheat Sheet:

SKIN TONE

Style Coaching Institute®
GLOBAL LEADERS



FAIR

Skin Tone I

You tend to have very pale, porcelain or ivory toned skin. You always burn in the sun, and your skin could have a naturally reddish undertone. Your eyes are most likely blue, grey or green and you might have blonde or red hair.



LIGHT

Skin Tone II

You have a fair or cream-coloured complexion, often coupled with subtle beige undertones. Your eye and hair colour could fall anywhere along the range of light to dark, and you may have freckles. You are able to tan occasionally.



MEDIUM

Skin Tone III

You may have a golden, honey-hued skin tone, or a light olive complexion. You can gradually build up a sun-kissed glow, but have to be cautious not to burn at the start of summer.



MEDIUM DARK

Skin Tone IV

Your skin is a gorgeous caramel tone, and tans quickly without burning. You most likely have dark hair and eyes that range from dark to hazel to ebony.



DARK

Skin Tone V

Your skin tone might range from radiant bronze to a rich brown. Both your hair and your eyes are likely to be naturally dark. You very rarely sunburn and generally tan quickly and easily.



DEEP

Skin Tone VI

Your skin tone falls in the range of deep mahogany to espresso. You almost never have sunburn and you tan quickly and deeply. You are likely to have both dark hair and dark eyes.

Images Copyright: www.ulta.com

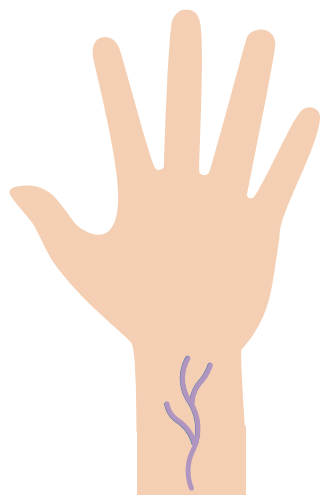
Content copyright © Style Coaching Ltd 2005 – 2020. All Rights Reserved.

Authorised for use exclusively by licensed Style Coaches™ (terms & conditions apply). Please do not remove or edit this notice.

www.stylecoachinginstitute.com | www.stylecoachingassociation.com

Cheat Sheet: UNDERTONE

StyleCoachingInstitute®
GLOBAL LEADERS

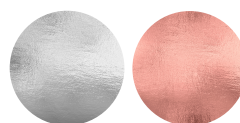


Cool Undertones

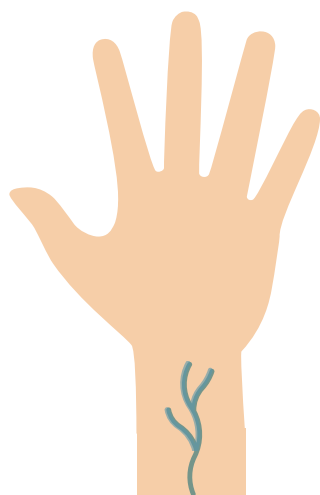
Veins appear blue/purple in natural light
Silver jewellery looks best on you, but you can also wear rose gold
Base colour of skin looks rosy, beige or has hints of blue, pink or red



Veins



Silver & rose gold jewellery

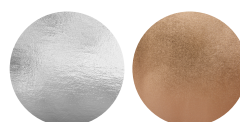


Neutral Undertones

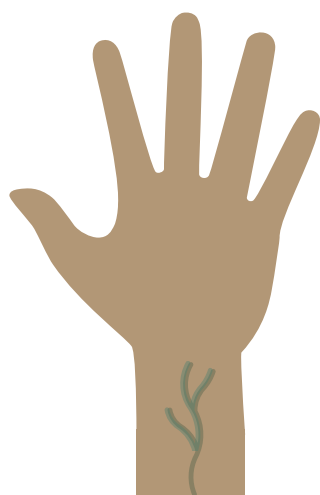
Veins appear blue/green in natural light
Both silver & gold jewellery look good on you
Base colour of skin doesn't appear pink/blue or yellow/gold/peach



Veins



Silver & gold jewellery

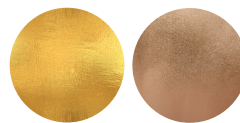


Warm Undertones

Veins appear green or olive in natural light
Gold and bronze jewellery & earth tones look best on you
Base colour of skin looks warm, yellow, golden or creamy



Veins



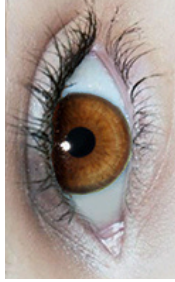
Gold & Bronze jewellery



Bright Blue



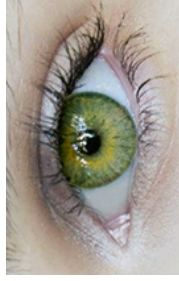
Green



Amber



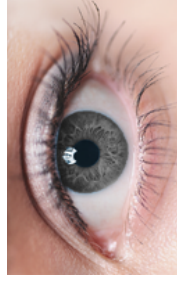
True Blue



Warm Green



Light Hazel



Dark Grey



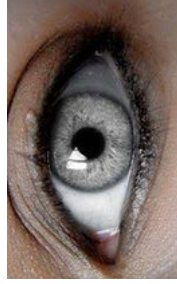
Cool Blue



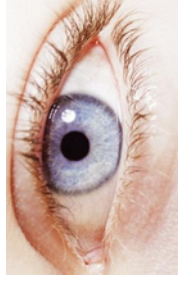
Light Green



Brown



Light Grey



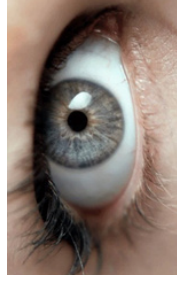
Light Blue



Soft Green



Light Brown



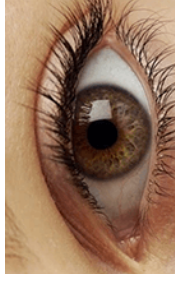
Warm Grey



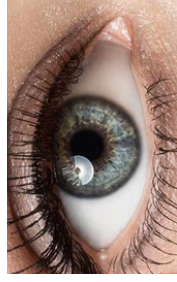
Azure



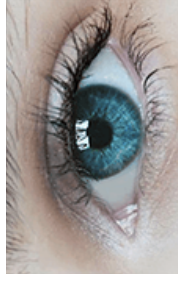
Emerald Green



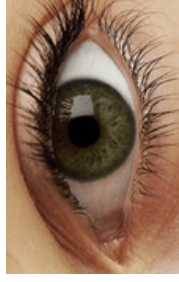
Dark Hazel



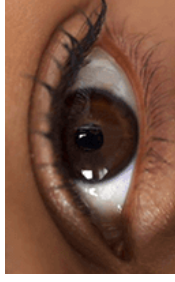
Dazzling Grey



Cyan



Dark Green



Deep Brown



Blue Grey

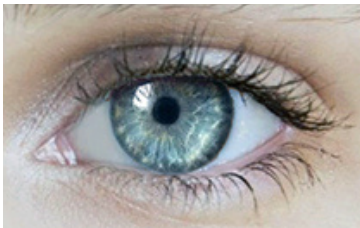
Cheat Sheet: EYE COLOUR

StyleCoachingInstitute®
GLOBAL LEADERS



Amber

Often confused with hazel eyes, amber eyes tend to be a solid golden or copper colour without flecks of blue or green typical of hazel eyes.



Blue

An eye that looks blue may be a tapestry of warm and cool greens, or may be better described as turquoise. Amazingly, you often can't see the green present in blue eyes unless certain colours are worn, then suddenly the eye colour seems to 'pop'.



Brown

Brown is the most common eye colour. Individuals with brown eyes have more melanin present, and over half of the people in the world have brown eyes. Brown eyes can range from honey toned to copper, bitter chocolate to ebony.



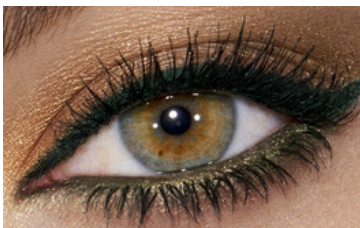
Grey

Grey eyes may be called "blue" at first glance, but they tend to have flecks of gold and brown. And they may appear to "change colour" from grey to blue to green depending on lighting, and mood (which may change the size of the pupil, compressing the colours of the iris).



Green

Green is the least common eye colour, but take note if the green is soft and muted, bright or dark, yellow-green or olive... Green eyes can often have golden flecks, which means they can easily be mistaken as hazel.



Hazel

Hazel eyes mostly consist of shades of brown and green. Much like grey eyes, they may appear to "change colour" from green to light brown to gold. Individuals whose eyes appear to be one colour closest to the pupil, another colour a little further out, and another colour around the edge of the iris are likely to have hazel eyes.

Cheat Sheet

HAIR COLOUR

StyleCoachingInstitute®
GLOBAL LEADERS



Cool Brown



Neutral Brown



Warm Brown



Medium Chestnut



Light Golden Brown



Soft Honey Brown



Light Brown



Medium Brown



Medium Cool Brown



Medium Warm Brown



Ash Blonde



Ash Brown



Medium Brown w/Honey



Mushroom Brown



Deep Brown w/Caramel



Bitter Chocolate



Dark Reddish Brown



Dark Chestnut Brown



Dark Golden Brown



Dark Mocha Brown



Plum Black



Burgundy Black



Ebony



Black



Blue Black

Content copyright © Style Coaching Ltd 2005 – 2020. All Rights Reserved.

Authorised for use exclusively by licensed Style Coaches™ (terms & conditions apply). Please do not remove or edit this notice.

www.stylecoachinginstitute.com | www.stylecoachingassociation.com

Cheat Sheet

HAIR COLOUR

StyleCoachingInstitute®
GLOBAL LEADERS



Iced Champagne
Blonde



Platinum
Blonde



Strawberry
Blonde



Cool Rose
Blonde



Pearl
Blonde



Light Cool
Blonde



Light Golden
Blonde



Medium Golden
Blonde



Champagne
Blonde



Golden Blonde
w/highlights



Light
Ash Blonde



Medium
Ash Blonde



Dark Ash
Blonde



Soft Honey
Blonde



Dark Golden
Blonde



Cool Violet
Blonde



Caramel
Blonde



Golden Honey
Blonde



Sandy Blonde



Dirty Blonde



Silver



Light Ash
Grey



Dark Ash
Grey



Gunmetal
Grey



Soft
Charcoal

Content copyright © Style Coaching Ltd 2005 – 2020. All Rights Reserved.

Authorised for use exclusively by licensed Style Coaches™ (terms & conditions apply). Please do not remove or edit this notice.

www.stylecoachinginstitute.com | www.stylecoachingassociation.com

Cheat Sheet

HAIR COLOUR

Style Coaching Institute®
GLOBAL LEADERS



Light Auburn



Medium Auburn



Dark Auburn



Light Golden Auburn



Muted Dark Auburn



Light Copper



Medium Copper



Dark Copper



Coppery Gold



Copper & Ginger



Light Reddish Brown



Medium Reddish Brown



Dark Reddish Brown



Ombre Ginger



Natural Ginger



Auburn Strawberry



Rosewood



Spicy Cinnamon



Hot & Fiery Ginger



Rich & Deep Mahogany



Cool & Dark Mahogany



Muted Burgundy



Burgundy Brown



Burgundy Red



Burgundy Black

Content copyright © Style Coaching Ltd 2005 – 2020. All Rights Reserved.

Authorised for use exclusively by licensed Style Coaches™ (terms & conditions apply). Please do not remove or edit this notice.

www.stylecoachinginstitute.com | www.stylecoachingassociation.com

WARM?



- Suits gold or bronze toned jewellery
- Base tone of skin looks warm, yellow, golden or creamy
- Veins on wrist appear to be green
- Suits off-white or cream
- Suits brown more than black
- Skin tans easily, sunburns rarely

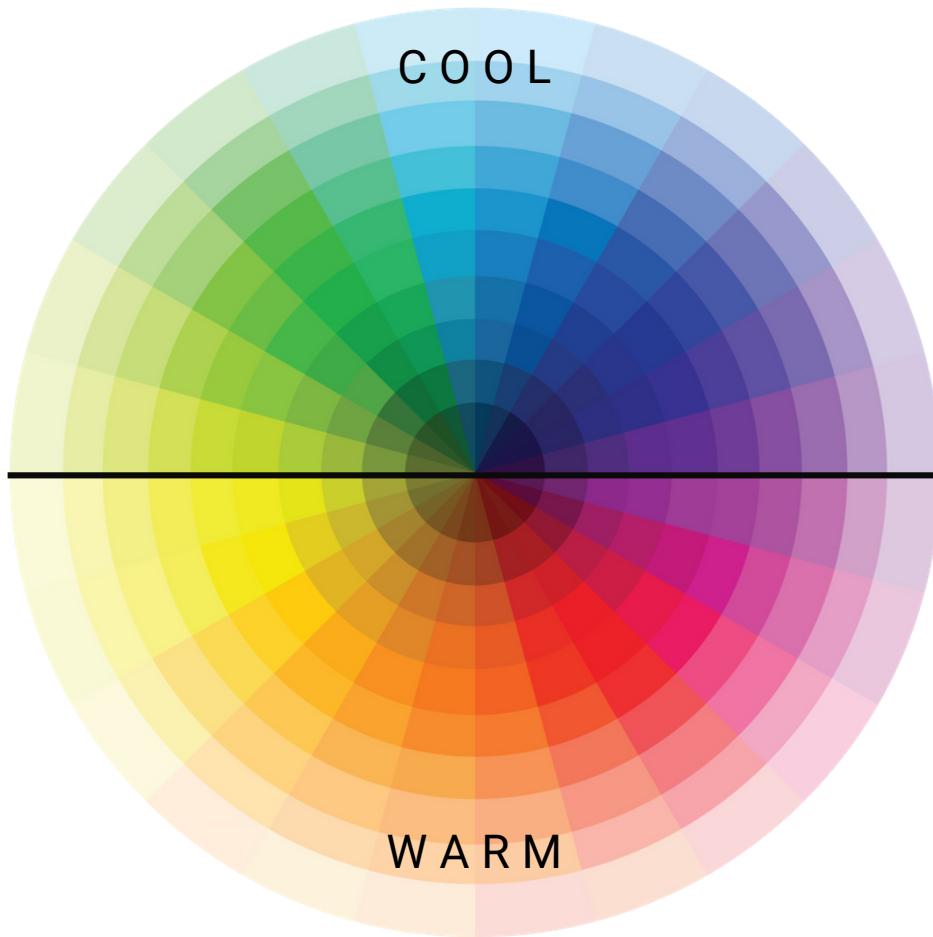
COOL?



- Suits silver or platinum toned jewellery
- Base tone of skin looks rosy, beige or has hints of blue, pink or red
- Veins on wrist appear blue or purple
- Suits bright white
- Suits black more than brown
- Skin sunburns easily, tans gradually

Cheat Sheet

COLOUR WHEEL



COLOUR HARMONIES



ANALOGOUS



COMPLEMENTARY



TRIAD



SPLIT COMPLEMENTARY



TETRAD



MONOCHROMATIC



SQUARE

COLOUR PROPERTIES



WARM



COOL



BRIGHT



MUTED



LIGHT

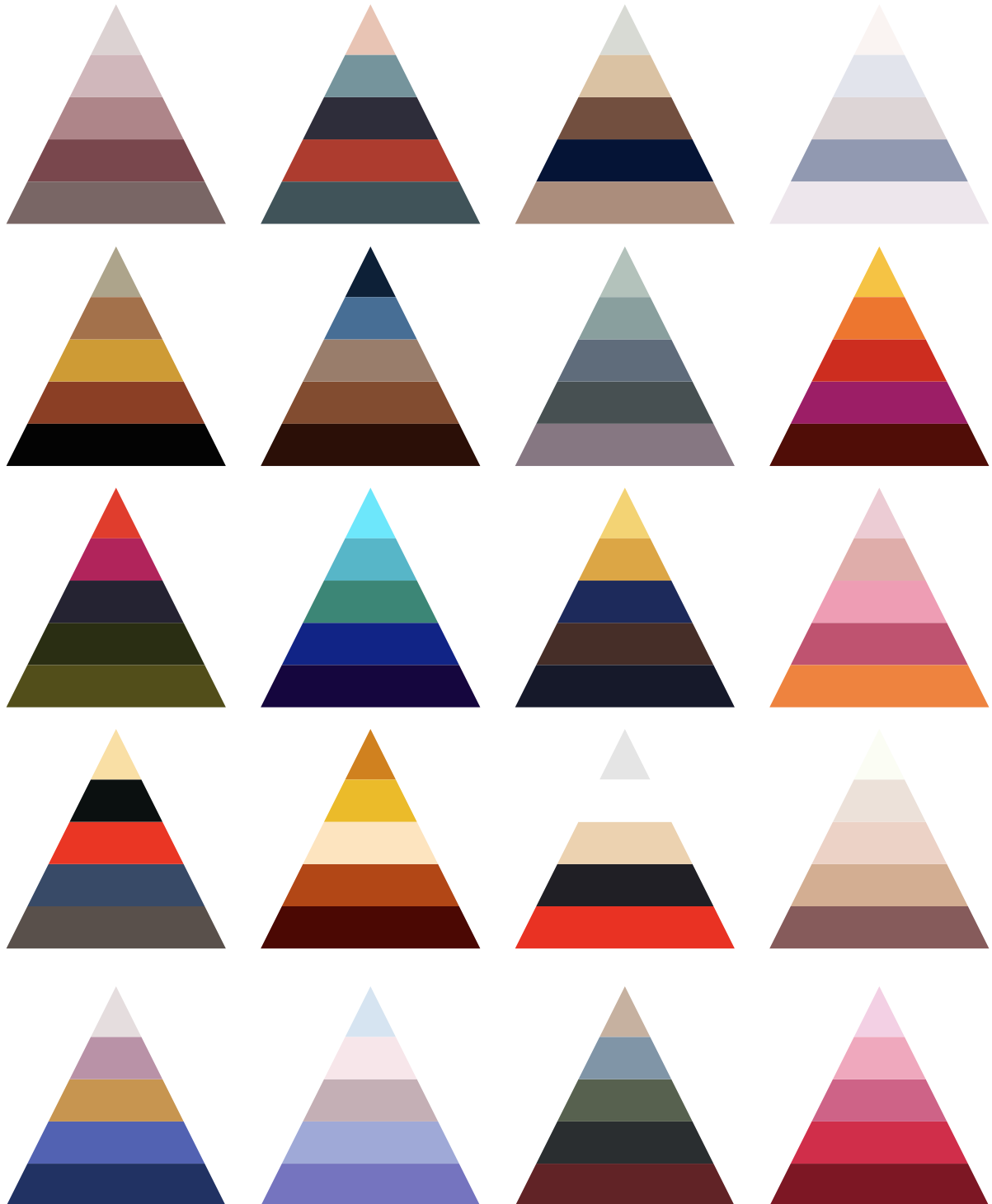


DARK

Style Coaching Institute[®]
GLOBAL LEADERS

Cheat Sheet

COLOUR PYRAMIDS



Style Coaching Institute®
GLOBAL LEADERS

Pinterest

[CLICK HERE FOR MORE COLOUR COMBINATIONS >>](#)

COLOUR & EMOTIONS



BLUE

Tranquility
Security
Integrity
Trust
Intelligence



TURQUOISE

Spiritual
Healing
Protection
Sophistication



GREEN

Freshness
Environment
Fertility
Healing
Earth



YELLOW

Brightness
Energy
Warmth
Happiness
Joy



PURPLE

Royalty
Spirituality
Luxury
Ambition
Wealth



PINK

Health
Happiness
Femininity
Compassion
Playfulness



RED

Love
Passion
Power
Strength
Desire



ORANGE

Courage
Confidence
Friendliness
Success
Optimism



BROWN

Approachability
Dependability
Nature & Earth
Longevity
Grounded



TAN

Calmness
Warmth
Simplicity
Neutrality
Understated



GOLD

Wealth
Wisdom
Prosperity
Value
Tradition
Luxury



SILVER

Glamour
Innovative
Graceful
Advancement
Healing
Reflection



WHITE

Innocence
Purity
Freshness
Cleanliness
Clarity
Simplicity



GREY

Security
Reliability
Intelligence
Dignity
Maturity
Practicality



BLACK

Intelligence
Elegance
Classic
Protection
Mystery
Dramatic

dominant & secondary COLOUR EQUATIONS

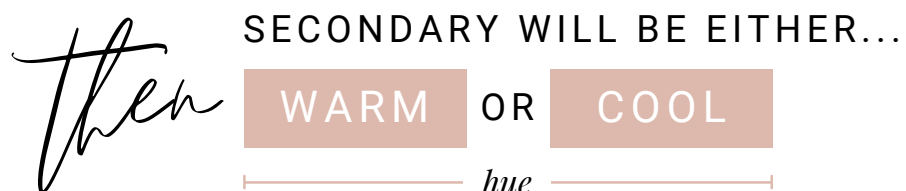
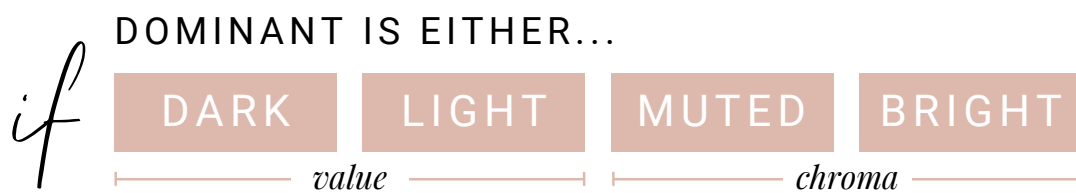
To discover an individual's 'colour season', we must begin by recognising which of the six colour characteristics is most dominant or obvious in their features and which is their secondary trait.

The 6 characteristics of colour are:

- VALUE: light or dark
- CHROMA: muted or bright
- HUE: warm or cool

Step 1: Simply observe the individual's Hair, Skin and Eyes. How would you describe them? If 2 out of 3 could be described as one of the above then this is their dominant or primary colouring.

Step 2: If the person's dominant characteristic is on the value (light or dark) or chroma scale (muted or bright), determine their hue next. If their dominant characteristic is on the hue scale (warm or cool), move on to determining their chroma next.



12 season

COLOUR EQUATIONS

DOMINANT		SECONDARY		COLOUR SEASON	
DARK	+	WARM	=	DARK AUTUMN	
<i>value</i>		COOL		DARK WINTER	

DOMINANT		SECONDARY		COLOUR SEASON	
LIGHT	+	WARM	=	LIGHT SPRING	
<i>value</i>		COOL		LIGHT SUMMER	

DOMINANT		SECONDARY		COLOUR SEASON	
MUTED	+	WARM	=	MUTED AUTUMN	
<i>chroma</i>		COOL		MUTED SUMMER	

DOMINANT		SECONDARY		COLOUR SEASON	
BRIGHT	+	WARM	=	BRIGHT SPRING	
<i>chroma</i>		COOL		BRIGHT WINTER	

DOMINANT		SECONDARY		COLOUR SEASON	
WARM	+	MUTED	=	WARM AUTUMN	
<i>hue</i>		BRIGHT		WARM SPRING	

DOMINANT		SECONDARY		COLOUR SEASON	
COOL	+	MUTED	=	COOL SUMMER	
<i>hue</i>		BRIGHT		COOL WINTER	

Light Spring

LIGHT + WARM

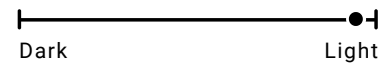


DIMENSIONS

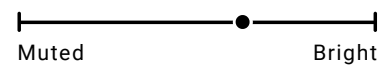
HUE



VALUE



CHROMA



VEINS



JEWELLERY



SKIN

Your skin is light for your ethnicity and ranges from fair to medium golden, honey to tan, with either neutral or neutral-warm undertones. You may see hints of golden yellow or 'peaches and cream'.

HAIR



Pearl Blonde

Strawberry Blonde

Light Golden Blonde

Medium Golden Blonde

Golden Honey

Light Golden Brown

EYES



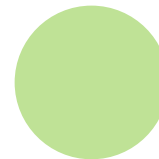
Light Blue

Light Green

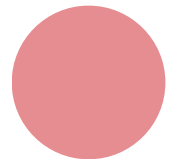
Light Hazel

Light Brown

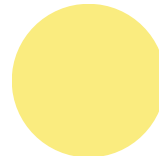
WOW COLOURS



Apple Mint



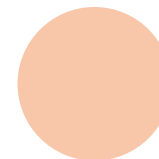
Flamingo



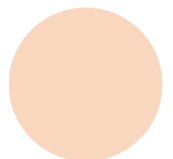
Corn Yellow



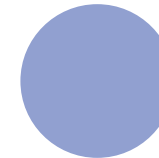
Warm Grey



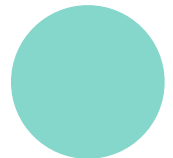
Peach Melba



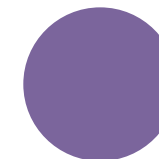
Apricot



Light Hyacinth



Aquamarine

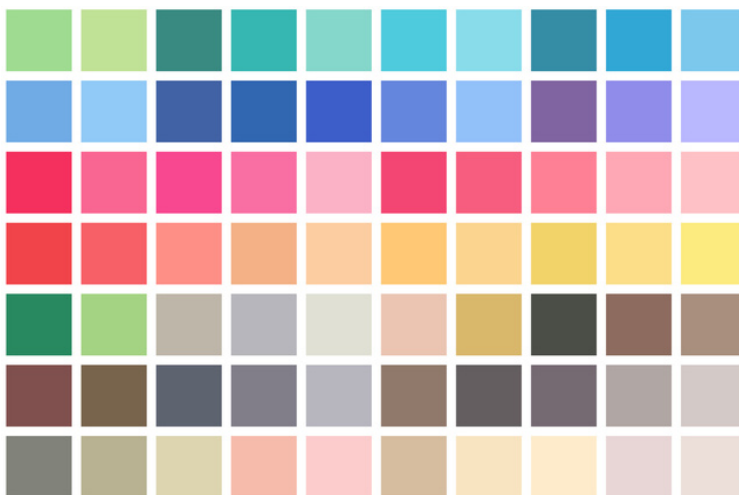


Light Pansy



Light Aqua

LIGHT, DELICATE & WARM COLOURS



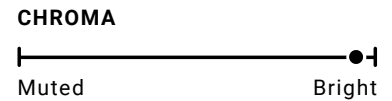
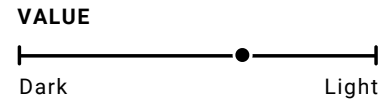
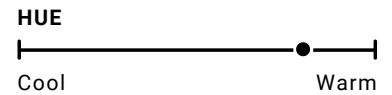
StyleCoachingInstitute[®]
GLOBAL LEADERS

Bright Spring

BRIGHT + WARM



DIMENSIONS



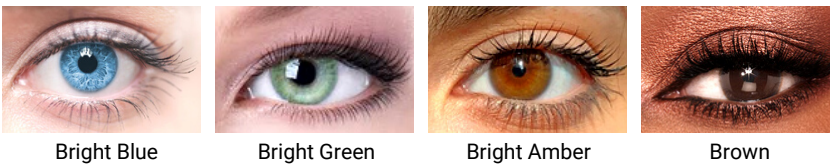
SKIN

Your undertone is either neutral or neutral-warm, which means you can wear both gold and silver (but gold will look slightly better). Skin tones vary from fair to dark but appear light for the person's ethnicity. The contrast levels will be high, and the eyes will be a standout feature. The skin will have a warm, yellow base, ranging from light to medium golden, tan, honey, or warm cocoa.

HAIR



EYES



WOW COLOURS



BRIGHT, CLEAR & WARM COLOURS



Style Coaching Institute[®]
GLOBAL LEADERS

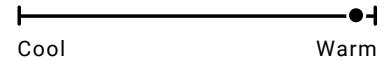
Warm Spring

WARM + BRIGHT

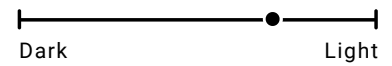


DIMENSIONS

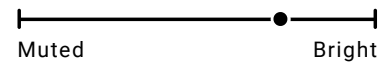
HUE



VALUE



CHROMA



VEINS



JEWELLERY



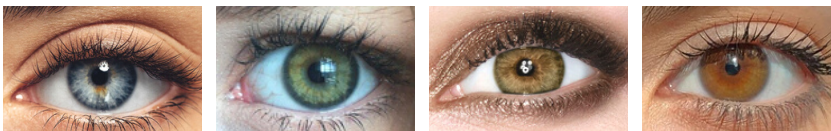
SKIN
HAIR
EYES



Your overall appearance is warm, golden and honey hued and your skin comes alive next to gold jewellery. Your skin tone may range from fair to dark and you may have some visible freckles. Your undertones are light to medium golden, warm beige or slightly bronzed.



Golden Blonde Golden Honey Blonde Natural Ginger Auburn Strawberry Golden Blonde Warm Cinnamon



Warm Blue Warm Green Hazel Amber

WOW COLOURS



WARM & BRIGHT COLOURS



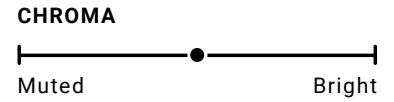
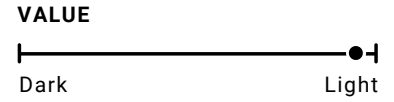
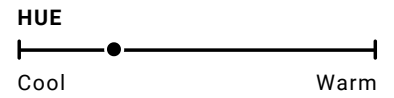
Style Coaching Institute®
GLOBAL LEADERS

Light Summer

LIGHT + COOL



DIMENSIONS



SKIN
HAIR
EYES



Your skin tone is light for your ethnicity, ranging from fair to light rosy, and up to a medium beige. The undertone is neutral or neutral-cool with light beige or subtle pinkish tinges. Gold, rose gold and silver can all be worn, but silver will look slightly better.

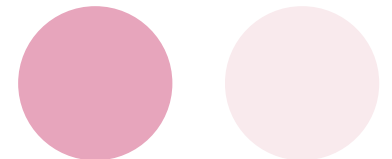


Light Cool Blonde Cool Rose Blonde Light Ash Blonde Sandy Blonde Medium Ash Blonde Ash Brown



Light Grey Light Blue Light Green Pale Azure

WOW COLOURS



Cashmere Rose Pink Ice



Wisteria Iced Aqua



Pastel Jade Primrose



Cornflower Soft Teal



Pink Peacock Mallard

LIGHT & COOL COLOURS



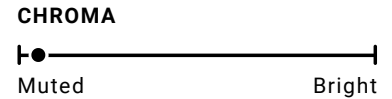
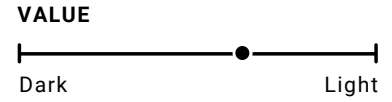
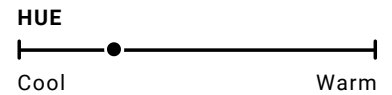
Style Coaching Institute®
GLOBAL LEADERS

Muted Summer

MUTED + COOL



DIMENSIONS



Your skin, eyes, and hair all blend together, which gives you a soft and dusky appearance. Your skin tone is either neutral, olive, or neutral-cool. It may have some ashy undertones and a rosy tinge. It can range from light to medium beige, cool tan, cool olive, or cool cocoa, but is most commonly medium.

SKIN

HAIR



EYES



WOW COLOURS



SOFT & COOL COLOURS



Style Coaching Institute®
GLOBAL LEADERS

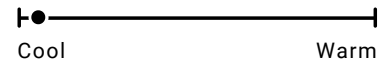
Cool Summer

COOL + MUTED

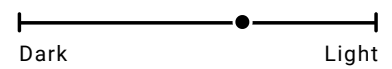


DIMENSIONS

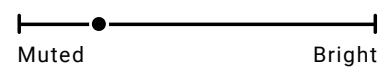
HUE



VALUE



CHROMA



VEINS



JEWELLERY



WOW COLOURS



SKIN
HAIR
EYES



Your skin has an obvious cool quality with blue, pink or beige undertones. It ranges from rosy ivory to medium beige, cool olive to cool cocoa. Silver jewellery makes your skin look fresh and radiant.



COOL & SOFT COLOURS



Style Coaching Institute®
GLOBAL LEADERS

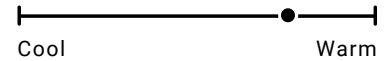
Dark Autumn

DARK + WARM

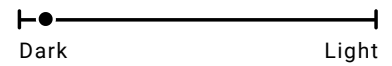


DIMENSIONS

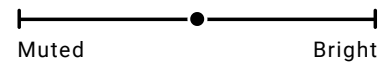
HUE



VALUE



CHROMA



VEINS



JEWELLERY

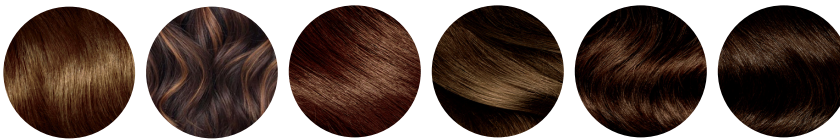


SKIN



The skin is either neutral or warm with golden yellow undertones. Gold and bronze jewellery looks better against it. Skin tone ranges from medium golden, honey, warm olive, tawny, warm chestnut, to warm ebony. Can be pale in winter, but tans easily and may have a few freckles.

HAIR



Medium Warm Brown Deep Brown w/Caramel Dark Chestnut Deep Golden Brown Mocha Brown Ebony

EYES



Dark Brown Dark Green Dark Hazel Deep Espresso

WOW COLOURS



DEEP, RICH & WARM COLOURS



Style Coaching Institute
GLOBAL LEADERS

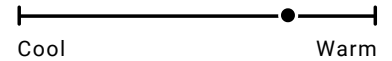
Muted Autumn

MUTED + WARM

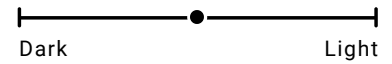


DIMENSIONS

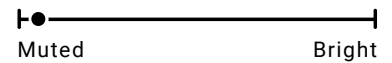
HUE



VALUE



CHROMA



VEINS



JEWELLERY



SKIN



The skin tone is either neutral, olive, or warm and can range from fair to tan with a golden yellow undertone. Gold and bronze jewellery looks better against it than silver. The overall contrast level is low to medium, and the features blend harmoniously. Skin tans easily.

HAIR



Champagne Blonde

Soft Honey Blonde

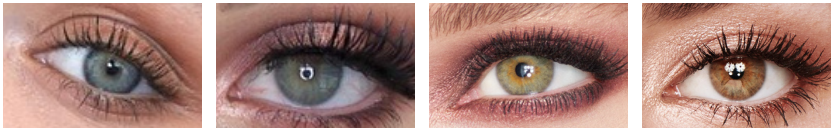
Golden Honey Blonde

Caramel Blonde

Soft Honey Brown

Mushroom Brown

EYES



Soft Blue

Soft Green

Light Hazel

Light Brown

WOW COLOURS



SOFT & WARM COLOURS



Style Coaching Institute®
GLOBAL LEADERS

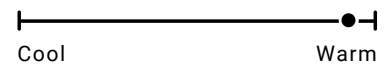
Warm Autumn

WARM & MUTED

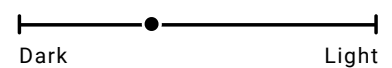


DIMENSIONS

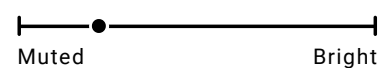
HUE



VALUE



CHROMA



VEINS



JEWELLERY



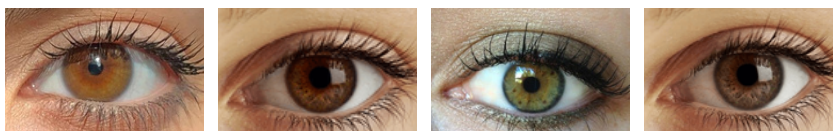
SKIN
HAIR
EYES



The skin tone ranges from fair to dark, possibly with some freckles. The undertones are obviously warm and looks beautiful with gold jewellery. The skin has a distinctive bronze or golden glow and pairs well with rich, warm and earthy colours.



Golden Honey Blonde Light Golden Auburn Light Auburn Medium Auburn Ombre Ginger Rich & Deep Mahogany



Amber Golden Brown Olive Green Dark Hazel

WOW COLOURS



Style Coaching Institute®
GLOBAL LEADERS

WARM & EARTHY COLOURS



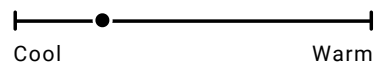
Dark Winter

DARK + COOL

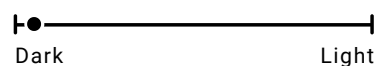


DIMENSIONS

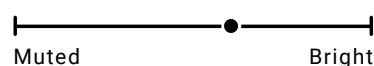
HUE



VALUE



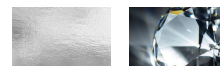
CHROMA



VEINS



JEWELLERY



SKIN



The skin is either olive, neutral, or neutral-cool with pink or rosy undertones. The skin tone can appear as light as cool ivory or as deep as a cool ebony, but usually looks best with silver jewellery. There is a distinctive contrast between the skin and hair.

HAIR



EYES



WOW COLOURS



DEEP & COOL COLOURS



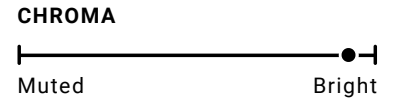
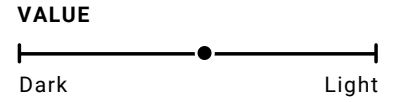
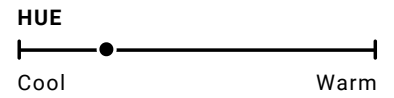
Style Coaching Institute
GLOBAL LEADERS

Bright Winter

BRIGHT + COOL



DIMENSIONS



SKIN

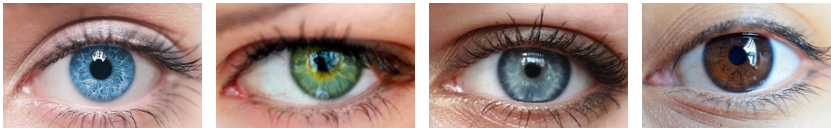
The skin has mainly cool undertones, which can be either blue or pink, or red if you are dark-skinned. Skin tones range from fair all the way to deep and there is a high level of contrast with the hair. Fair skins appears clear and almost translucent, while darker skins have a radiant and glowing quality.

HAIR



Neutral Brown Medium Cool Brown Bitter Chocolate Dark Golden Brown Ebony Black

EYES



Bright Cyan Emerald Green Dazzling Blue-Grey Deep Rosy Brown

WOW COLOURS



CLEAR & COOL COLOURS



Style Coaching Institute[®]
GLOBAL LEADERS

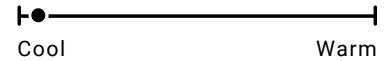
Cool Winter

COOL & BRIGHT

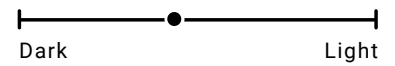


DIMENSIONS

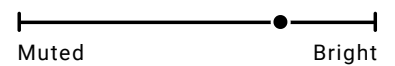
HUE



VALUE



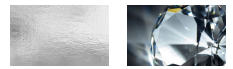
CHROMA



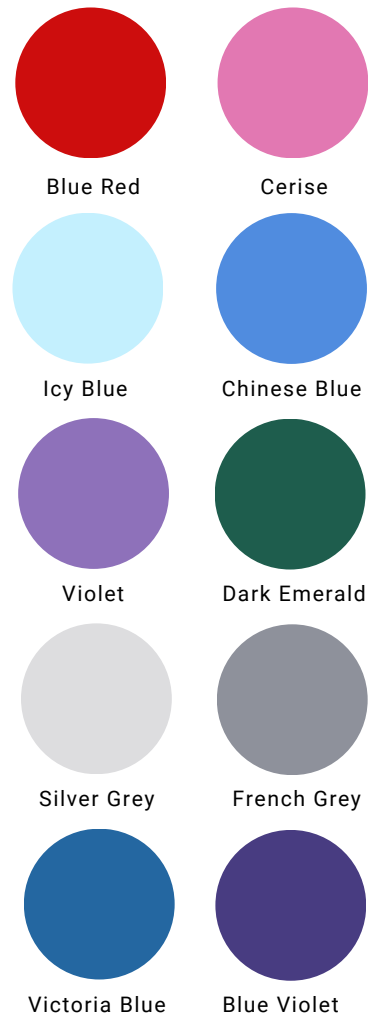
VEINS



JEWELLERY



WOW COLOURS



SKIN
HAIR
EYES



There is an absence of warmth in any features and the skin has clear blue or pink undertones. The skin can be fair, milky white, pale rosy beige, medium beige, cool olive, or cool cocoa. Pure white and clear diamonds look beautiful next to the skin, as do silver and platinum items of jewellery.



COOL & BRIGHT COLOURS



Style Coaching Institute®
GLOBAL LEADERS